





PRISTINE BACKDROP OF
SHIVALIK HILLS.
SERENE NEIGHBOURHOOD OF
30,000 TREES.

Your lifestyle reflects who you are, what you strive for and your address will reveal what you have achieved. Hi Greens residences have been intricately crafted to compliment your true personality, while keeping you close to the beauty and serenity of nature. Every morning enjoy the view of Shivalik Hills and in the evening, sip a hot cup of coffee enchanted by the forest that lies just behind your home. The project revolves around your daily life, taking cues from what you want and what you take pleasure in. The exclusive apartments give you a sense of being 'at home' and relish the unmatched on-site lifestyle amenities that you always wished for.



IT'S TIME TO
RISE IN **STYLE**
& OPULENCE.







BEAUTY
TO BEHOLD
SUBLIME
TO **INHABIT.**





Hi Greens residences are a striking new addition to the bustling streets and architectural landscape of Zirakpur. The architecture is inspired from modernist brick façade that is further complimented by geometrical figures and clean horizontal lines. Keeping innovation, sustainability and excellence in mind, Hi Greens aims at providing an abode to millennial generation which is a reflection of their lifestyle and distinct individual personality.



GO FOR A
MORNING STROLL,
MEDITATE OR
PLAY WITH YOUR
KIDS AT THE
**LANDSCAPED
GREENS.**

Make most of the lush green area just a few steps away from your abode. This is the place where you can start your morning in peace and tranquility while exercising, doing yoga or meditation. Sit by the pool or at the open amphitheatre and experience the bliss of nature.





A PLACE
WHERE YOU
FEEL AT EASE
& **RELAXED.**





BRINGING OUT THE BEST IN EVERY **SPACE.**

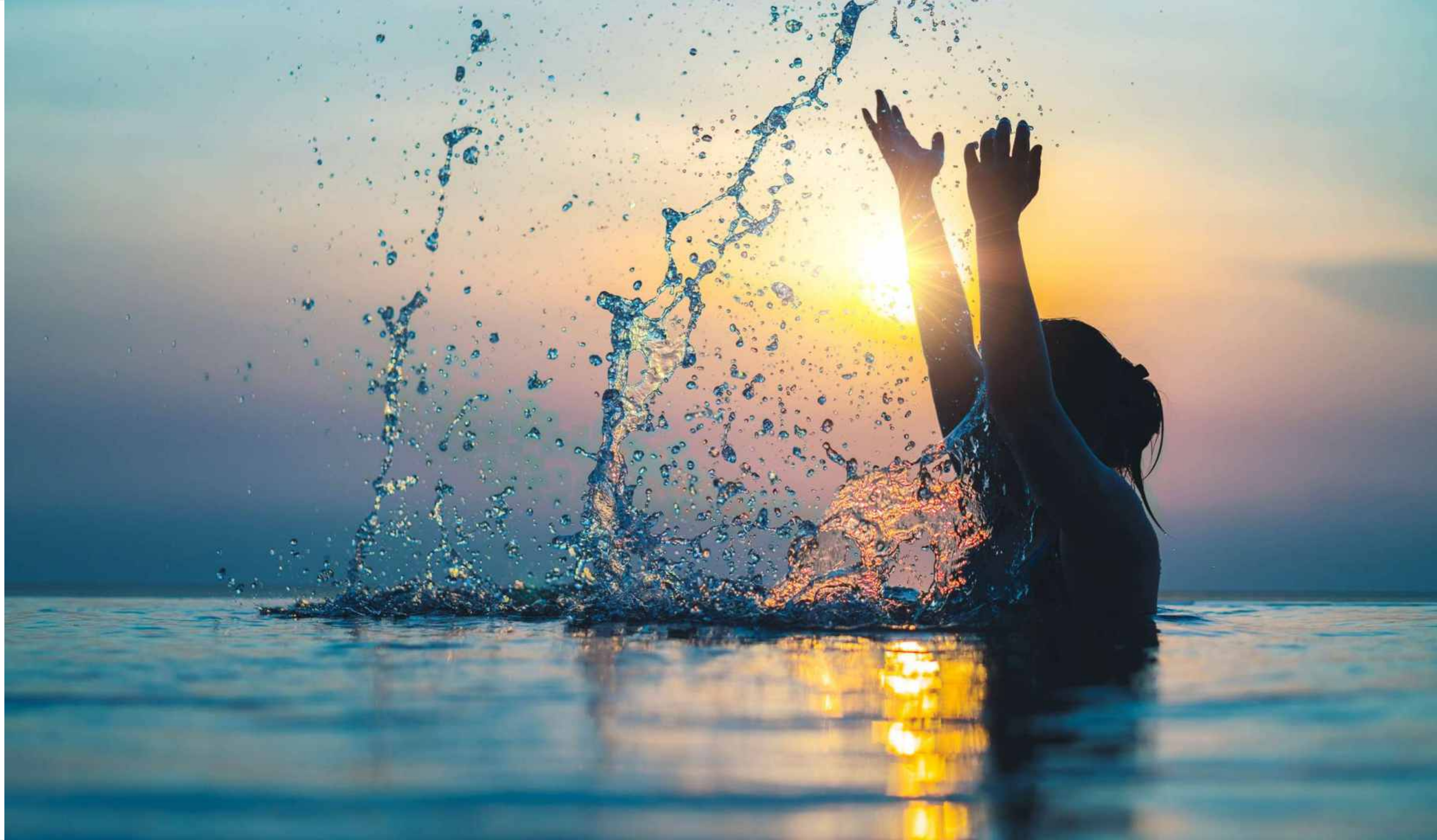
As you step into your home, take a moment to marvel its beauty and feel yourself getting relaxed. The spectacular Zirakpur skyline at dusk will enchant you and embrace you in its warmth.







GET READY
TO **UNWIND**
YOURSELF FOR
THE EVENING.





INDULGE IN LIFE'S SIMPLE PLEASURES.

The club house in Hi Greens will offer you a perfect place where you can unwind after a stressful day. Take a refreshing dip in the swimming pool or invite your friends for a hearty match of tennis. Make use of the state-of-the-art gym to burn some extra calories or you can enjoy and socialize at the game room with your neighbours, friends and family.



HOST A SPECIAL NIGHT FOR YOUR FRIENDS, MAKING IT AN AFFAIR TO REMEMBER.





SPEND SOME
WE TIME ON
THE **ROOFTOP**.
END THE DAY
IN STYLE.

An exciting day and what a great night! Now, it's time to unwind in the luxurious comfort of your calm and quiet sanctuary. You are also at the liberty to calm your mind while enjoying the gorgeous views of the city's skyline from your spacious balcony before heading to bed.





10

LUXURIOUS
FLOORS WITH
STILT PARKING

9

STYLISH
LAYOUTS TO
CHOOSE FROM

182

3/4 BHK RESIDENTIAL UNITS,
DUPLEX, SKY VILLAS,
TERRACE VILLAS,
PATIO+ APARTMENTS

24

HOURS
SECURITY
SURVEILLANCE

15

MINUTES TO
INT. AIRPORT &
CITY AMENITIES

OUTDOOR AMENITIES

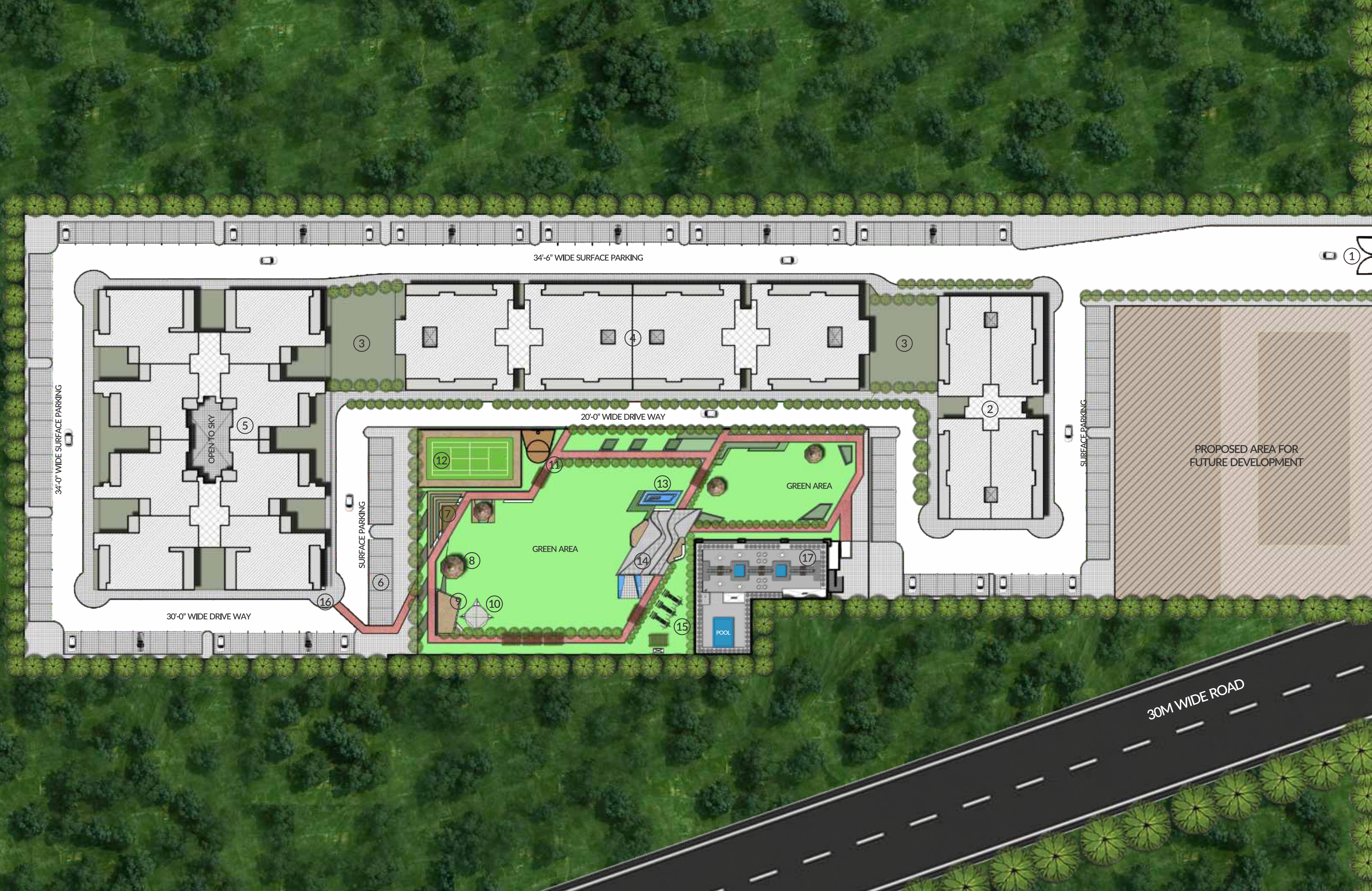
- Luxurious landscaped entrance.
- 24 hours security.
- Landscaped open green area.
- Wide interlocked internal roads.
- Luxury street & bollard lights.
- Ample stilt & open parking.
- Passenger & service lift in each block.
- Rain water harvesting system.
- Water sprinkler system for green area.
- Water softner for drinking water.
- Complete fire fighting system.
- Luxury textured painted external walls.

INDOOR AMENITIES

- Spacious 6 feet balconies.
- Stain free flooring and finishes.
- Modular kitchen with modern fittings.
- Elegant wardrobes.
- Branded fittings in bathroom.
- Provision for split AC.
- Power backup.

RECREATIONAL AMENITIES

- Roof top swimming pool.
- Roof top cafe and barbeque area.
- State of art gymnasium.
- Badminton & basketball courts.
- Sand pits & play areas for kids.
- Ampitheatre. Gazebo & sitting zones.
- Jogging and cycle track.
- Guest rooms for convenience.
- Pool, table tennis & indoor games.
- Multipurpose party hall.
- Yoga & meditation zone.
- Multi play station.



- 1 MAIN SITE ENTRANCE
- 2 TOWER 1 (S+9/10 FLOOR)
- 3 TERRACES
- 4 TOWER 2 (S+8+PENTHOUSE)
- 5 TOWER 3 (S+9/10 FLOOR)
- 6 SURFACE PARKING
- 7 OPEN AIR THEATRE
- 8 GAZEBO
- 9 SAND PIT
- 10 TENSILE STRUCTURE
- 11 BASKETBALL COURT
- 12 BADMINTON COURT
- 13 WATER FEATURE
- 14 GATHERING PLAZA
- 15 OPEN AIR GYM
- 16 JOGGING TRACK
- 17 CLUB HOUSE

ZIRAKPUR IS AT THE FOREFRONT OF ECONOMIC GROWTH AND SUSTAINABILITY AND HAS BEEN RECOGNISED AS A DYNAMIC AND PROSPEROUS CENTRE OF NORTH INDIA. SURROUNDED BY VARIOUS TOP-NOTCH LANDMARKS AND DEVELOPMENTS, THE CITY KEEPS YOU WELL-CONNECTED. THE REFINED ROAD LINKS MAKES VEHICULAR MOVEMENT A BREEZE WHETHER YOU ARE WITHIN THE CITY OR GOING ELSEWHERE.

THE LOCATION HAS BEEN STRATEGICALLY CHOSEN TO OFFER YOU A LIVING ENVIRONMENT WHICH IS FREE OF COMMOTION YET CLOSE TO ALL IMPORTANT ATTRACTIONS, MEETING YOUR SPECIFIC REQUIREMENTS.



Best Price & Metro - 5 Mins | Paras Downtown Mall - 10 Mins | Hotels & Restaurants - 5 Mins | Medical Facilities / Hospitals - 5 Mins | Schools - 5 Mins
 Sports Complex - 5 Mins | KFC / McDonalds / Gopal's - 5 Mins | Railway Station - 15 Mins | Airport - 15 Mins | Bus Stand - 10 Mins





MS Landcorp is a reputed Developer in the Tricity, with the experience of over 2 decades in land development and various residential and commercial projects. Being well known for their on-time delivery of projects, the Developer adds value to their every initiative, earning trust from their clients and customers alike.



MS Enclave - Zirakpur



Mewsgate - Kharar



Garden Estate - Derabassi



Metro Tower - Zirakpur



Highland Park - Zirakpur



Neelkanth City - Bhawanigarh



7 City - Samana

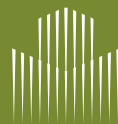


Mahesh Enclave - Barnala



Surya City - Tapa

This brochure is purely conceptual and do not constitute a legally binding offer. All images are artist's impressions and not necessarily fully representative. In the interest of maintaining high standards, the contents herein, including all services, infrastructure, products, designs, amenities, facilities, site plans, layout plans, floor plans, areas, dimension, specifications, elevations, and perspectives views are tentative in nature and are subject to variations and modifications, without notice, till the final completion of the project, at the sole discretion of Competent, Statutory Authorities or the Company. Architectural features may differ in different apartments. Soft Furniture, furniture, and gadgets are not part of the offering. All images are an artistic conceptualization and does not purport to replicate the exact products. Hi Greens is a government approved group housing project.



MS LANDCORP

Kishanpura-Sanoli Road

Zirakpur, SAS Nagar (PB)

Tel: +91- 99151 44888

Email: info@propertyatdoorstep.com

www.propertyatdoorstep.com